	Technical Specification TS ZSO 001	Page: 1 / 6
		As of: May 10, 2006
Reconditioning Service-Quality criteria: Cleaning condition		

Released by: Obiegli

1. Description

The cleaning condition for Doka products is described here.

The „Reconditioning service quality criteria“ are simplified summaries of the Reconditioning service working instructions and are generally translated into the languages of all our branch offices.

■ Applicable zone

Doka Group

Products: All products

■ Responsibility

Reconditioning service, warehouse

■ Additional documentation

■ Revisions

Central Service Coordination (ZSO)

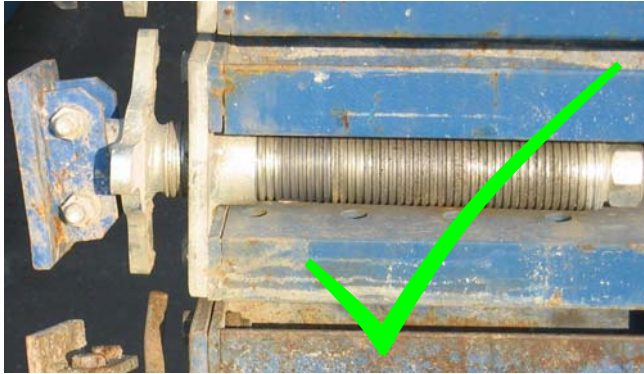
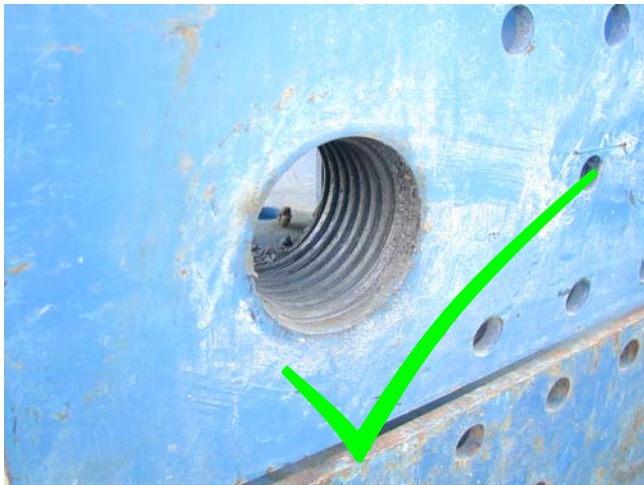
Update status	Date	Page	Changes, Supplements
New edition	May 10, 2006	complete	Substitute for working instruction ZSO 010

■ Distribution

Doka Sales:	Manager, Branch office manager, Director commercial office, Logistics-Sales, Director reconditioning service resp. warehouse
Doka Engineering:	F&E, ZSO
Doka Production:	QS, ZAS, DMB, DHV

Reconditioning Service-Quality criteria: Cleaning condition**2. Cleaning conditions****■ Free from concrete:**

Threads and gear racks

e.g. Foot spindle at supporting
construction frame

e.g. Thread at attachable frame



Forbidden soiling at turnbuckle.

Reconditioning Service-Quality criteria: Cleaning condition

- **Free from concrete residues, concrete milk allowed:**



Connecting surfaces, carrying surfaces, boreholes, guidances, connecting sleeves, stacking surfaces, pawl-plugs, plywood, concrete touching areas, contact surfaces of the stacking flange, transverse sleeves, anchoring sleeves.

e.g. Plywood at Framax element.



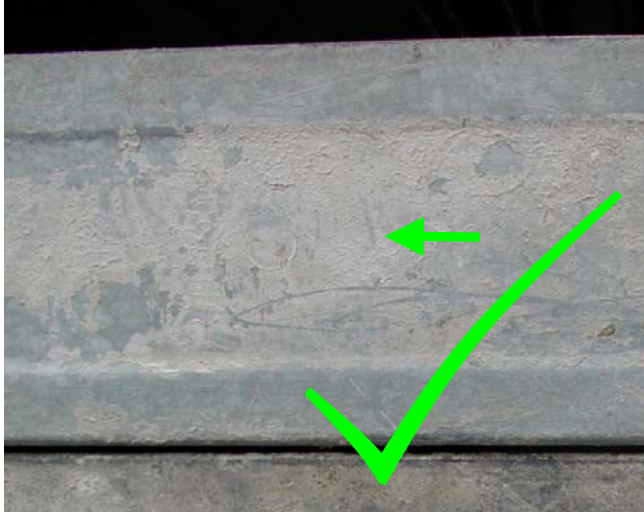
e.g. Connecting surface at Framax framed panel.



Too strong soiling at Xlife plywood.

Reconditioning Service-Quality criteria: Cleaning condition**■ Filmy concrete residues up to 1mm allowed:**

Plywood edge at FF20 and circular formwork elements, tables, column elements KS etc.



e.g. Free area at framed panel



e.g. Plywood edge at table



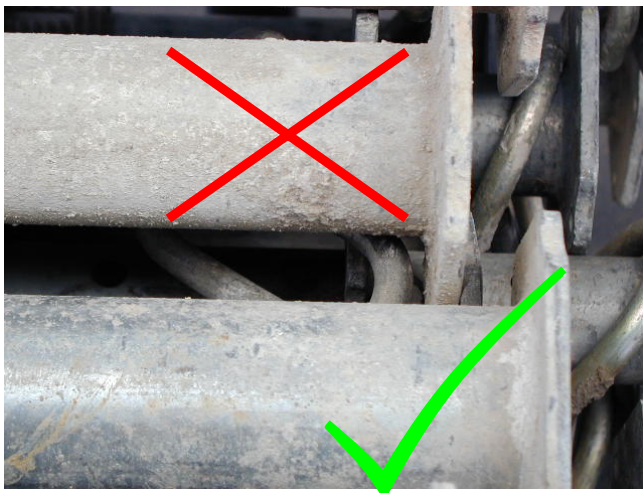
Too strong soiling at framed element.

Reconditioning Service-Quality criteria: Cleaning condition

- **Concrete sprays and spots of concrete crusts** At other surfaces.
allowed:



e.g. Transverse tube at supporting scaffolds



e.g. Stand tube at floor props



Too strong soiling at the rear side of the element frame.

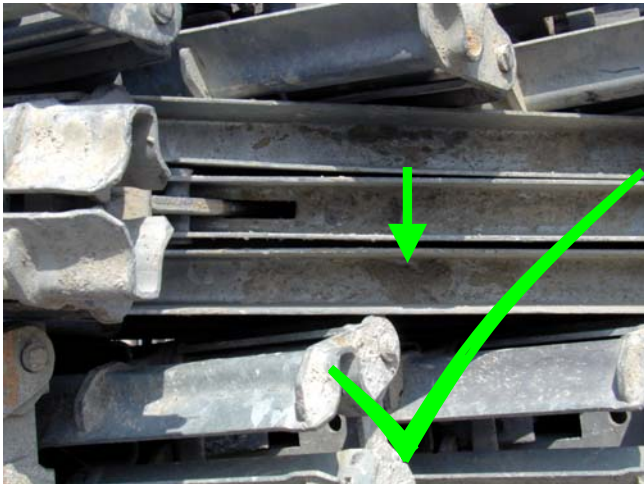
Reconditioning Service-Quality criteria: Cleaning condition

■ Concrete crusts allowed:

At corners that are difficult to reach.



e.g. Stacking flange FF20



e.g. Removable folding tripod

Too strong concrete crusts at
supporting timber beam.