

Straight Flight Staircases



WELAND

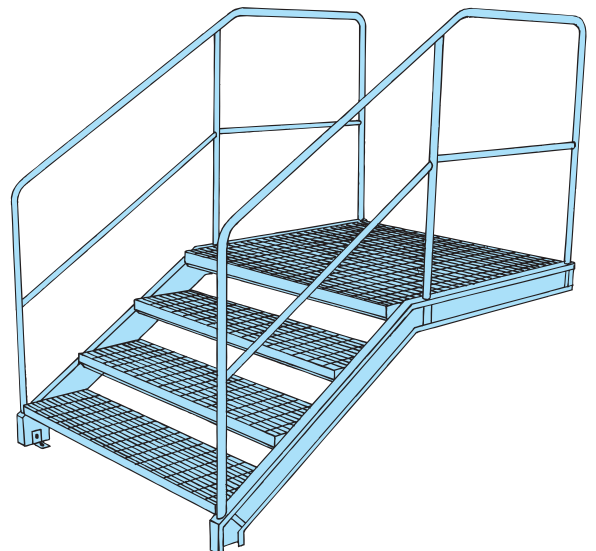


Straight Flight Staircases

Weland standard straight flight staircases are manufactured from steel and are mainly used in industrial buildings and as escape staircases in different types of buildings.

The staircases consist of stringers, treads and landings of grating as well as balustrades. The steel components are, as a rule, hot dip galvanized and supplied in separate parts for assembly on site.

Our manufacture also comprises straight flight staircases for other applications such as installations in office buildings, flats, entrances, public rooms, schools etc. In these cases the treads normally consist of other material than grating. This also applies to railings and surface treatment.



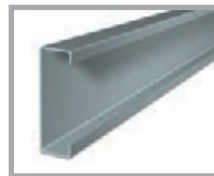
Weland - Standard

Stringers

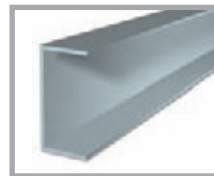
WUC-profiles / Channel / Flat Bar

Weland standard straight flight staircases are manufactured with stringers of WUC profile. This profile has been developed with the objective of achieving high stability combined with low weight.

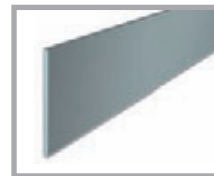
If the WUC profile cannot be used, we also manufacture stringers from flat bar or channel.



WUC-profile



Channel



Flat Bar

Standard Stairtreads

Type TH6 is manufactured from press-welded grating with mesh opening size 30 x 75 mm c/c.

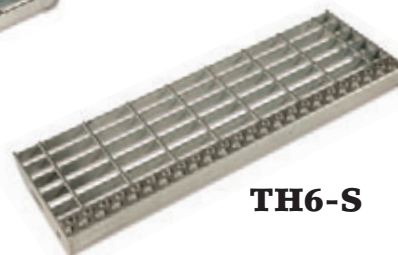
Type TH6-S is manufactured from the same grating, but is provided with a safety front edge marking the front of the tread and giving increased non-slip properties.

Standard stairtreads are hot dip galvanized and kept in stock.

Special type treads can be manufactured from grating chosen from Weland grating programme.



TH6



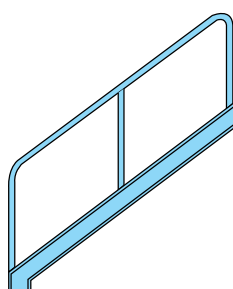
TH6-S

Standard Balustrade

Straight flight staircases can be provided with balustrades on one side, on both sides or balustrade on one side and handrail fixed to the wall on the other. The height of balustrade is as standard 900 mm in the flights and 1100 mm on the landings. In case of danger of falling and if the drop is more than one normal storey, the height of balustrade in the flights should also be 1100 mm.

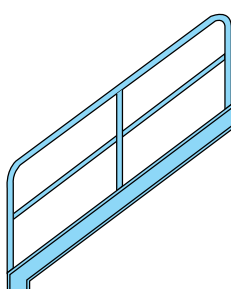
Standard Balustrade without intermediate rails

Handrail and balusters from tube 42 mm dia.



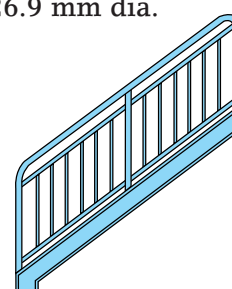
Standard Balustrade with intermediate rails

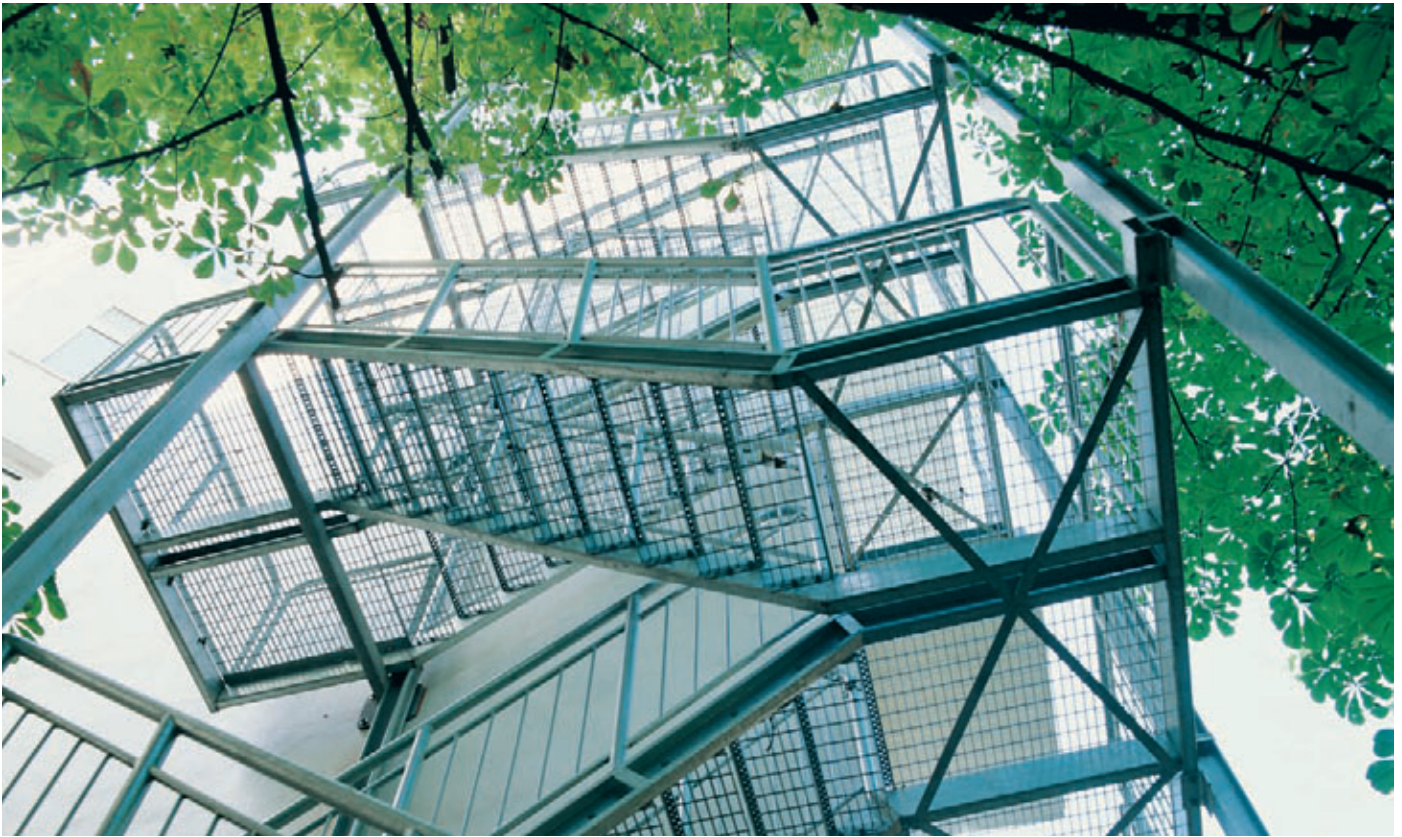
Handrail and balusters from tube 42 mm dia. Intermediate rails from tube 26.9 mm dia.



Child-proof Balustrade Balustrade

Handrail and balusters from tube 42 mm dia. Intermediate balusters from round bar 12 mm dia. Maximum daylight between balusters 100 mm. Top and bottom rail from tube 26.9 mm dia.





Designing

The simplest method for design is to leave the planning to us. Our technical department can look back upon many years of experience with the planning and dimensioning of straight flight staircases. Just send us your drawing, we do the rest.

We dimension and draw the staircase, and all you need to do is check the measurements and approve the drawing before manufacture starts.



Fire Classification Certificates

Weland straight flight staircases are tested and approved meeting ISO 834 and NT Fire 005. The staircase has been examined by the Danish Fire Prevention Institute (Dansk Brandteknisk Institut). The testing procedure has been carried out in accordance with Danish Standard DS 1051.1 "Fire Testing".





Straight Flight Staircases Standard



Staircase with Balustrade without intermediate rails



Staircase with stringer of WUC-profile.



Staircase with Channel-Stinger



Stairtread with non-slip front edge.



Staircase with Child-proof Balustrade.







Multi-flight staircase with Child-proof Balustrade.



Multi-flight staircase with support leg.



Straight flight staircase with Standard Balustrade.



Multi-flight staircase with different types of fixings.



Staircase with support leg.



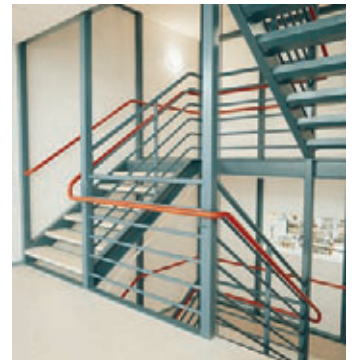
Straight flight staircase with landing and bracket.



Staircase with steel plate treads covered with tiles, child-proof balustrade and wooden handrail.



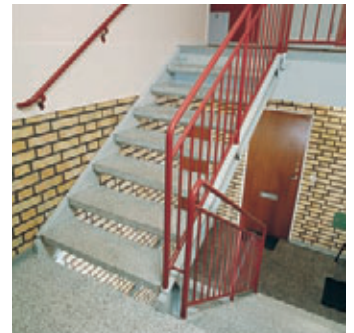
Concrete treads.



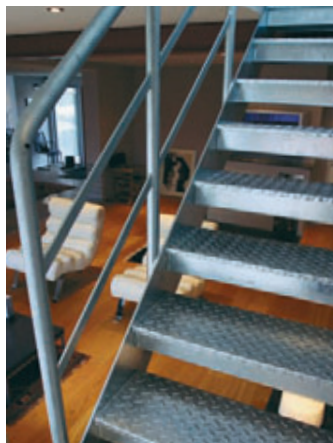
Staircase with concrete treads covered with tiles.



Escape staircase with protective cage.



Staircase with Terrazzo concrete treads.



Staircase in residential house with durbar treads.



Staircase with pram-ramp.



Staircase with wooden treads and Special balustrade.





Head office:

Weland AB

Box 503

SE-333 28 Smålandsstenar

Sweden

Telephone: +46 371 344 00

Telefax: +46 371 344 78

Homepage: www.weland.com

E-mail: info@weland.se

Subsidiary company:

Weland Ltd.

Hardley Industrial Estate, Hardley

Southampton, Hampshire SO45 3NQ

England

Telephone: 02380 849747

Telefax: 02380 849054

Homepage: www.weland.co.uk

E-mail: info@weland.co.uk

Weland AB reserve the right to changes of design. All rights reserved.